

Getting Started as a Parent/Guardian



Table of Contents

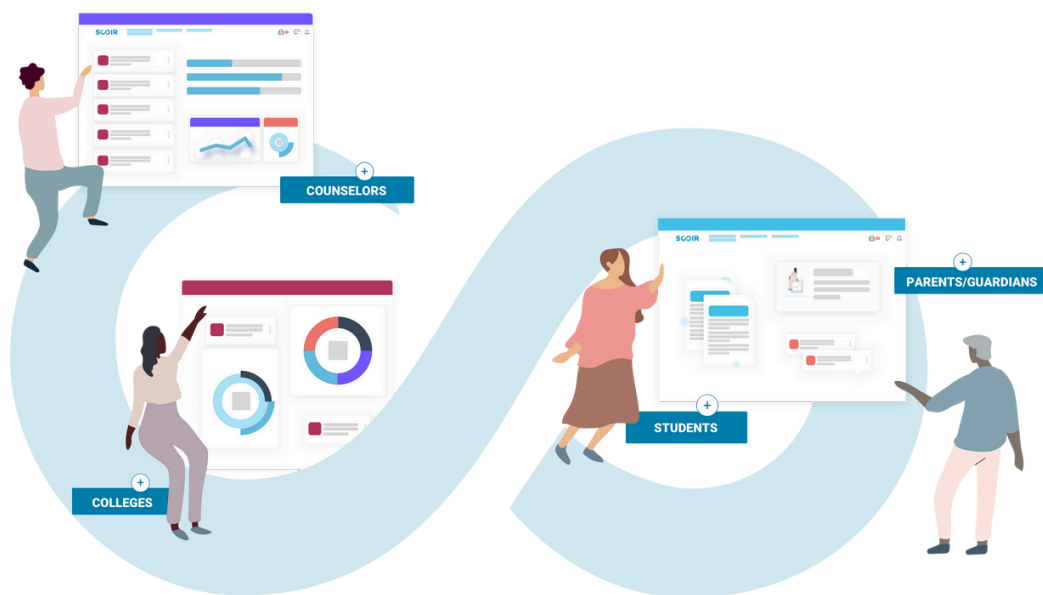
- 3 What is Scoir**
- 4 Creating Your Account**
- 5 Your Student's Account**
- 6 Your Student's Document Requests**
- 7 Searching for and Suggesting Colleges to Your Student**
- 10 Financial Information and Estimates**
- 11 Messaging and Surveys**

What is Scoir

Scoir expands college and career access and improves student outcomes by connecting students, supporters, high schools, and colleges with simple software and solutions for a better admissions experience.

Our platform connects students to a powerful set of tools to help them identify their talents, search for their college fit, plan with their supporters, and apply when ready.

As a parent/guardian, you play an integral role in Scoir by providing your student(s) with college suggestions, financial information, and general guidance. Here is our [Parent/Guardian Overview video](#).



Creating Your Account

Your child or high school can invite you to connect with them on Scoir, or you can sign up for Scoir independently. Once you're linked with your student, you can enjoy researching colleges together!

Joining via student invite

If you've been invited to join Scoir by your student and don't have an account, click the link in the invite email you received to get started.

Joining via a high school invite

If you've been invited to join Scoir by your student's high school and don't have an account, click the link in the invite email you've received to get started.

Joining on your own

To create an account on your own, visit app.scoir.com/signup, choose the Parent/Guardian tile, enter your email, and click "Continue." Finally, check your inbox to activate your account.

How to link with your student

If you already have a parent/guardian account and wish to link to your new student, ensure your student added you to their profile and sent you an invite. Then, sign in to your parent/guardian account and click "Accept" to link with the student presented on the Get Started page.

When you're finished, click Continue.

Your Student's Account

Viewing Your Student's Profile

Your Student's Profile hosts all of their personal information on Scoir, including personal details, academic information, test scores, activities and achievements, college preferences, and the student Drive.

Please note that the parent/guardian view of the Student Profile is read-only and can't be edited. If you spot any inaccuracies or would like to update your student's information, please notify the student or their counselor.

The screenshot shows the Scoir 'My Students' page. The top navigation bar includes 'College Search' and 'My Students'. The left sidebar lists navigation options: Overview, Personal Details, Academic Overview, Personal Bio, Activities & Achievements, College Preferences, Career Profile, My Drive, College & Applications, My Colleges, and Scattergram. The main content area is titled 'Personal Details' and contains information for 'Elena Nya Polin "Nya"'. It includes contact details (address, phone, email), legal information (sex, gender, race, ethnicity, citizenship), and application IDs. Below this is the 'Academic Overview' section, which shows the student's high school as 'Polin Academy' and their test scores for ACT and SAT.

ACT		SAT	
Superscore	Highest	Superscore	Highest
31	31	1370	1360

Viewing Your Student's College List

Your Student's College List can be displayed by clicking on the "My Student" tab at the top of the page, then "Colleges & Applications."

Assisting with Your Student's Document Requests

Viewing Your Student's Document Storage

Scoir offers a comprehensive document storage solution for students with support for common file types and external links. Parents/guardians can view and add items to their student's Drive.

Your Student's Early Decision Contract

Early decision (ED) is a binding agreement, where the student indicates to the college that, upon acceptance, they will attend that school. This is a good choice if they know the school is the top choice. However, students may only apply to 1 school using this process. Because it is a binding agreement, the institution requires signatures from the student, the family, and a school counselor.

Responding to an ED contract request email from Scoir

Once your student indicates that they are planning to apply to a school ED, you'll receive an email inviting you to complete the parent/guardian side of the ED contract.

1. Click "Review and Sign" in the email
2. Click the checkbox to agree to the ED contract and choose "Sign"

Responding to an ED contract request within Scoir

Upon login, you will be prompted to complete the ED contract

1. Click "Get Started" to begin the signing process
2. Check the box to consent and then choose sign to add your digital signature
3. A timestamp will indicate the time the signature was added

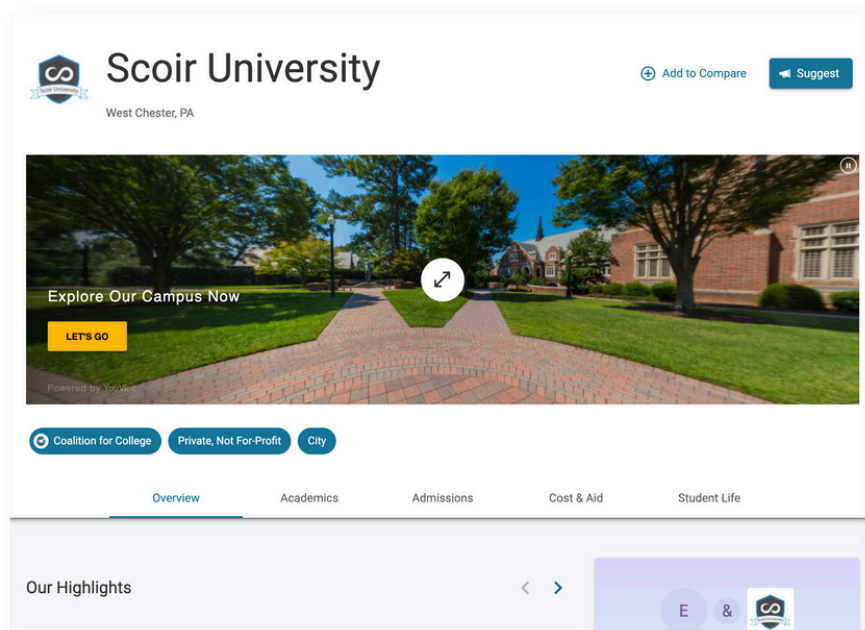
You don't need to sign immediately, but it must be signed before submitting the application docs. To skip signing the document, choose "Skip" instead of "Sign."

Searching for and Suggesting Colleges to Your Student

Scoir's College Search feature allows you to search for colleges for your student. By default, College Search results will be filtered by your student's preferences, to help you quickly gain insight into your student's interests and mindset on their college journey.

College Profiles

A college's profile contains all of the information available for a college on Scoir and is broken into 5 main sections: Overview, Academics, Admissions, Cost & Aid, and Student Life. Virtual tours powered by YouVisit are also displayed at the top of the page (when available).



Searching for and Suggesting Colleges to Your Student

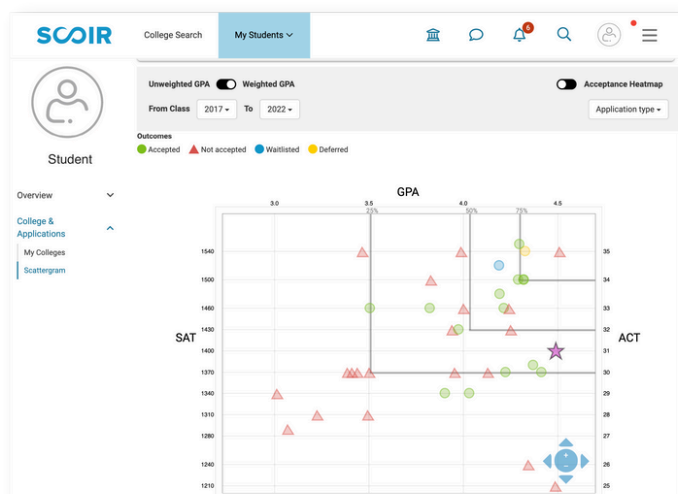
Scattergrams

Scattergrams are only available if your student is linked to a high school using Scoir. A student will only be plotted as a data point on the Scattergram if they have a GPA and an ACT or SAT score in their profile. This may affect students without test scores who apply completely test-optional.

To view Scattergrams, follow these steps.

1. View your student's profile by clicking on “Me” in the upper right, then referring to the “My Students” section and choosing your student from the list that appears
2. Go to the “Colleges and Applications” option on the left-hand side and select “Scattergram”

On the Scattergram page, you can toggle between Scattergrams for any college you have suggested to your student, plus any college your student is Following, Applying to, or has Applied to. A purple star will indicate your student's position on the Scattergram in relation to historical admission data from the student's school.



Searching for and Suggesting Colleges to Your Student

Suggesting Colleges to Your Student

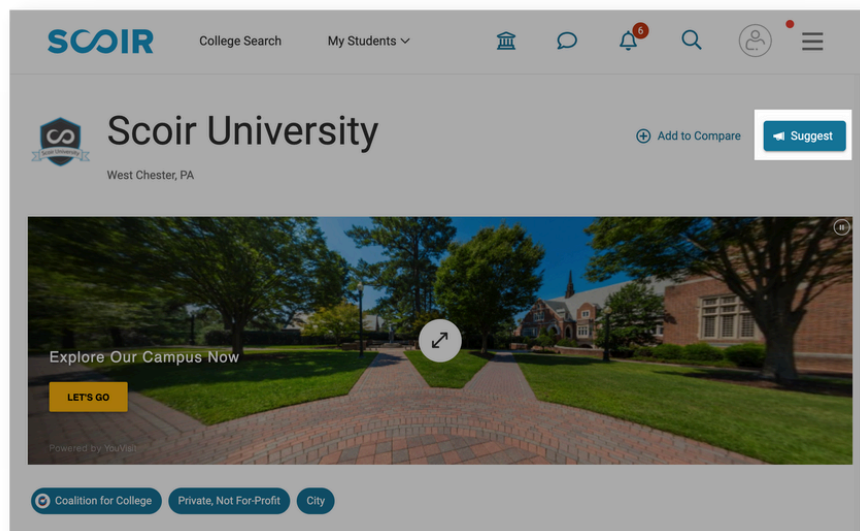
To suggest a college to a student, follow these steps.

1. First, click on the “Discover” tab
2. Search for colleges via the filters available on the College Search page
3. Click the “Suggest” button on the college tile of the college you would like to suggest

Additionally, if you click on your desired school name, you’ll come to that school's college profile.

To suggest the school to your student, click the Suggest button at the top of the college profile.

Once a college is suggested, the student may act on it from the Suggested column of their My Colleges page. The status of suggested colleges is visible to parents/guardians on the Suggested view within the context of the student.



Financial Information and Estimates

Calculating the cost of college can be confusing. Scoir provides multiple levels of financial estimates based on the information you provide. Your information is secure and only visible to you.

There are 3 levels of financial estimates provided by Scoir. The more information you provide, the more accurate your financial estimates will be. Click the calculator button in the upper right corner of Scoir to adjust your settings.

Sticker Price

The sticker price is the published cost of attendance before aid: tuition, room, board, and fees.

Average Net Price

The average net price is the default estimate and is the average reported price for all enrolled students.

Income-based Net Price

The income-based net price is calculated based on your household income range. To select a household income range, click the Household Income link beneath the Income-based Net Price section, then select the range that applies to your household. When you're finished, click "Save." College tiles will be updated to reflect Household Income Range price estimates. You can update your Household Income Range at any time.

Messaging and Surveys

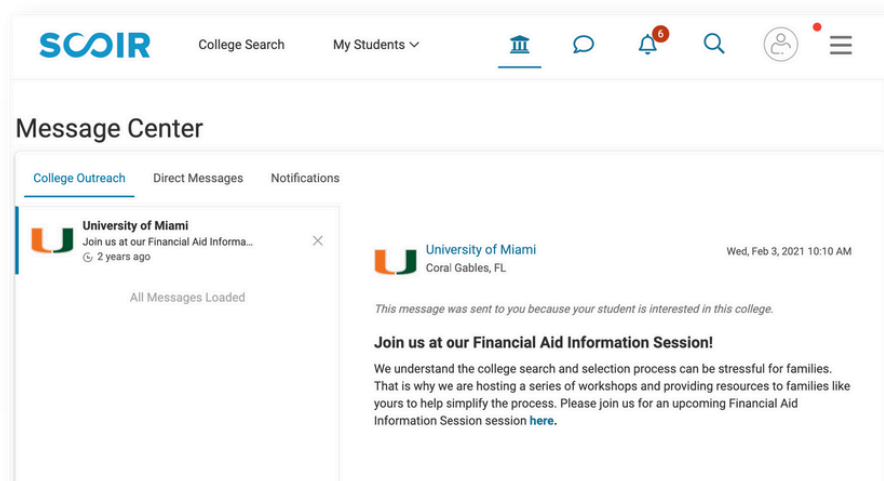
Message Center

To see any Messages sent to you by either your student or their counselor, click “Inbox.”

There, you’ll find College Outreach, where you’ll see any messages from colleges your student is interested in. For example, if a college your student is interested in is hosting a Financial Aid Information Session, they may send a Message encouraging you to sign up.

The next section within the Message Center is Direct Messages. Here, you can communicate with your student and/or their counselor. To write a message, click the “Compose” button to write your message, and click “Send.”

The third and final section of the Message Center is Notifications. This is where any Early Decision contract reminders, standardized test reminders, and other notifications are held.



Messaging and Surveys

Surveys

In Scoir, your student's school or counselor may assign you a survey regarding your student. If you have a survey, you'll be notified both via email and within the Notifications tab in Scoir. To find these surveys, log into Scoir and click on the menu in the top right corner. Then, under your name, among other options, click Surveys.

Then, you can click on any survey you have not yet started. By filling out the survey and clicking Submit, your responses will be sent to your students' counseling team.



SCOIR

www.scoir.com



[Create Account](#)

[Log In](#)

SCOIR

Financial Information and Estimates

Custom Price Estimate

Scoir uses a proprietary algorithm for assessing the Custom Price Estimate per college. To receive a custom price estimate, click the Calculate your SAI button beneath the Custom Price Estimate section.

You'll be prompted to enter information about your family, income, and assets. The more information you provide, the more accurate your SAI will be.

When you're finished entering your information, click "Calculate." You will be presented with a Custom Price Estimate. To confirm, click "Finish."

College tiles will be updated to reflect Custom Price Estimates based on your SAI.

You can update your SAI information by clicking the "Edit your SAI" button beneath the Custom Price Estimate section.

